



KUMAUN

Precision & Magnetic Tools

SHREEPAD INDUSTRIES

Shed No. 43, PARVATI INDUSTRIAL ESTATE,
Pune – Satara Road, PUNE- 411009, INDIA.

Tel. No.: +91- 20- 24221765

Fax. No.: +91- 20- 24223772

Email: shree99@pn2.vsnl.net.in

Website: kumaun-magnetictools.com

KUMAUN

UNIVERSAL SURFACE GAUGE



KUMAUN

UNIVERSAL SURFACE GAUGE

Universal Surface Gauge has many desirable features and is designed for wide range of uses, which are supplied in four sizes. The base is made from case hardened steel, ground on bottom and at one end. The Fine adjustment feature makes it possible to obtain quick and accurate settings. This adjustment is made by a knurled thumbscrew, which is located at the end of the rocker. The rocker runs the 2/3 the length of the base and pivots against a stiff spring located at the rear end of the base.

SPECIFICATIONS:

	KM – 900	KM – 901	KM – 902	KM – 903
HEIGHT	185 mm	300 mm	450 mm	600 mm
BASE				
LENGTH	55 mm	80 mm	100 mm	110 mm
AND				
WIDTH	45 mm	65 mm	85 mm	90 mm

Additional pillar of 4", 9", 12", and 18" can be supplied on demand to respective cat nos

KUMAUN

EXTRA HEAVY DUTY SURFACE GAUGE



KUMAUN

EXTRA HEAVY DUTY SURFACE GAUGE

These very heavy and robust stands are used whenever the highest measuring accuracy and an optimum rigidity is demanded. The extremely sturdy columns with the rigid base guarantee highest rigidity. This ensures simple and rapid setting of the stand and clamps and scriber in any position even at moderate tightening. A fine adjustment device allows rapid and easy setting at desired size. Suitable for pattern making.

SPECIFICATIONS:

	KM - 904	KM – 905
LENGTH OF BASE	130 mm	160 mm
WIDTH OF BASE	105 mm	130 mm
HEIGHT OF BASE	35 mm	40 mm
RIGID COLUMN	600 mm	1000 mm
DIAMETER OF COLUMN	22 mm	25 mm

KUMAUN
DIAL INDICATOR STAND



KUMAUN

DIAL INDICATOR STAND

This tool is useful for testing spindle run out of machine tools, lathe work etc. It is well adapted for inspection of the parallelism of surfaces. The indicator can be swiveled in all directions. The base is of steel and provided with T slots for convenience in clamping. The surfaces of the base are accurately ground. New clamping system ensures quicker rigid clamping even with moderate tightening. The holder for the Dial Indicator is equipped with fine adjustment device permitting vibration free adjustment to zero.

SPECIFICATIONS:

	KM – 300
LENGTH OF BASE	250 mm
WIDTH OF BASE	50 mm
HEIGHT OF BASE	35 mm
HEIGHT OF COLUMN	225 mm
DIAMETER OF COLUMN	18 mm

KUMAUN

HEAVY DUTY DIAL INDICATOR STAND



KUMAUN

HEAVY DUTY DIAL INDICATOR STAND

(With fine adjustment)

This extra heavy and ruggedly made universal testing stand is used wherever the highest accuracy is required in using a comparator. It can be used in many different ways; on the surface plate in testing parallel surfaces of work pieces on machine tools for setting up pieces to be machined with reference to already existing surfaces or for inspecting mounted pieces for run-out etc.

The surfaces of the H-formed base, the column and the extension arm are high precision ground. The column can be moved and clamped in any position of the base with a knurled nut.

The extension arm, which can be adjusted in height moved lengthwise and swiveled is sufficiently rigid that vibrates during the measurement even with the fullest extension are at a minimum.

The base of the indicator stand is made of steel or cast iron.

SPECIFICATIONS:

KM - 301

HEIGHT OF COLUMN	300 mm	500mm	800 mm
MAXIMUM HORIZONTAL EXTENSION	350 mm	350 mm	350 mm
LENGTH OF BASE	300 mm	300 mm	300 mm
WIDTH OF BASE	100 mm	100 mm	100 mm
DIAMETER OF COLUMN	40 mm	40 mm	40 mm
EXTENSION ARM	25 mm	25 mm	25 mm

KUMAUN

LEVER TYPE DIAL INDICATOR



- RH – AM Rectangular Holder type AM 8 mm*4.8 mm pin diameter 4 mm.
 Rectangular Holder Type BM 13 mm*6mm, pin diameter 4 mm.
 Cylinder Holder Type CM 9.5 mm diameter, pin diameter 4 mm.
 Swivel Clamp with Dovetail Holder (Metric models) Bore diameter 4 – 9.5 mm.
- KJH – D Knuckle Joint Holder (Dovetail).
 Rectangular Holder Type A 5 / 16 “ * 3 / 16 ,pin diameter 1 / 4 “
 Cylindrical Holder Type C 3 / 8 “ diameter pin diameter 1 / 4 “.
 Swivel Clamp with Dovetail Holder (Inch models) Bore diameter 1/4–3/8”.

COMPLETE SET

SPECIFICATIONS CONSISTS OF

- Tool post holder 9.5 * 19 * 150
 Upright spindle 8 dial * 115 L
 Universal Clamp 6.5 and 8 holes
 G – Clamp 33 capacity round or flat
 Extra contact points With Domed Anvil and Round Anvil Tommy bar. Hole attachment with indicator Mounting hole and swivel Arm
 9.5 hole for dial indicator.

	TYPE	READING	TRAVEL	GRADUATION
40 mm	787-1	0.001 mm	3.5 mm	0-50-0
Black Plunger	787-2	0.001 mm	3.5 mm	0-100
Type Dial	787-3	0.001 inch	0.14 inch	0-25-0
Gauges	787-4	0.001inch	0.14 inch	0-50

KUMAUN

UNIVERSAL TEST INDICATOR SET



KUMAUN

UNIVERSAL TEST INDICATOR SET KM – 787

This 787 Universal Dial Indicator Set has a spiral type mechanism of unusually rugged construction for the more severe applications around machinery and for general tool work. The indicator can be supplied in inches as well as in metrics. The hole attachment used in conjunction with any standard dial indicator make it possible to test inside of holes and many other surfaces that can not be reached with the regular indicator spindle. The attachments have 0.375" diameter hole to fit all indicators and are securely clamped to the indicator stem by means of a knurled screw. The ball end of the swivel arm, which contacts the work, is 1/8 "diameter and the body of the arm is 3 / 16" diameter.

KUMAUN
SMALL MAGNETIC BASE



KUMAUN

SMALL MAGNETIC BASE

SRD – 95

Small bodied square in shape magnetic base with a “ V “ which permits use on round or flat therefore can easily be mounted on machine tools or work surfaces, with greater magnetic pull and quickly released by a simple leverage

SPECIFICATIONS:

BASE – 1.1 / 4” * 1.1 / 4 * 1.5 / 16”

COLUMN – 5 / 16” Dia * 4” Height

MAGNETIC PULL - 25 kg (50 lbs.)

Supplied with two rods namely, one for standard dial gauges and dial test indicators and other for standard. Machine shop clamps with a step of 5 / 16 “& 7 / 32 “at the ends.

SRD – 96

Similar to SRD – 95 but it is having Fine Adjustment for rapid setting indicators to desired readings.

SPECIAL BALL JOINT BASE: SRD – 95 & SRD – 96B

Dimensions are same as SRD – 95 & SRD – 96. But the pillar is provided with Bolt & Socket Joint Action.

KUMAUN

LARGE MAGNETIC BASE



KUMAUN

LARGE MAGNETIC BASE

SRD – 97

Medium duty rectangular shape magnetic base with powerful magnetic pull and a quick release lever with 'V' shape at the bottom facilitate easy mounting on a machine tool or work surface. Exclusive fingertip release tilts unit away from work for easy removal.

SPECIFICATIONS:

BASE – 1.1 / 8" * 1.1 / 8" * 3. 3 / 4"

COLUMN – 5 / 1 6" DIA 4" LENGTH

MAGNETIC PULL – 30 KG

Supplied with two rods, one to hold standard dial gauges and dial test indicators 1 / 4 " in diameter and other multi step rod 1 / 4 " dia with 5 / 6: O.D. at one end and 7 / 32 " O.D. at the other end for use with standard machine shop clamps.

SRD – 98

Similar to SRD – 97 but having Fine Adjustment to facilitate rapid setting of indicator dials at a desired position.

SPECIAL BALL JOINT BASES: SRD – 97 B & SRD – 98 B

Dimensions are same as SRD – 97 and SRD – 98. But the pillar is provided with Bolt and Socket Joint Action.

KUMAUN

ROUND MAGNETIC BASE STAND



KUMAUN

ROUND MAGNETIC BASE STAND SRD – 100

This is a compact universal permanent magnetic stand. It's medium size and exceptional magnetic pull makes easy application of dial test indicator and dial inductor to machine tools for the purpose of setting and checking work pieces.

SALIENT FEATURES

Can hold plunger as well as lever type dial indicator.

Guaranteed magnetic pull to permanent magnet.

Easy locking device to lock gauges.

With little leverage base can be taken over from iron surface.

SPECIFICATIONS:

Base	41 mm dia x 38 mm L
Column	12.5 mm dia x 180 mm L
Magnetic Pull	20 kg. (50 lbs)

SRD – 102

Specifications are same as SRD-100. But it is provided with **Fine Attachment Screw** for accurate final setting of the indicator dial. It has Magnetic Pull of 50 lbs.

**KUMAUN
MINOR MAG**



KUMAUN

MINOR MAG

It is a universal stand with a permanent magnetic base used for easy application of dial test indicators.

SPECIFICATIONS:

BASE DIAMETER	38 mm
TOTAL HEIGHT	75 mm
MAGNETIC PULL	10 kg

KUMAUN

PERMANENT MAGNETIC BASE



KUMAUN

PERMANENT MAGNETIC BASE KM – 900 M

A unique combination of Surface Gauge with rigid Permanent Magnetic Base holds indicator firmly to any iron and steel face.

The lifting lever releases the base from its firm holding.

Main pillar adjusted quickly and locks firmly to any desired angle above or below base.

The fine adjustment by knurled thumbscrew makes it possible to obtain quick and accurate setting. Provision is made for indicator holding and Scriber attachment.

SPECIFICATIONS:

MAIN PILLAR O.D: 5 / 16 “* 9“1, 8 mm * 225 mm

L * W * H OF BASE 80 * 62 * 35 mm

MAGNETIC PULL 25 kg

KUMAUN

MAGNETIC BASE INDICATOR HOLDER



KUMAUN

MAGNETIC BASE INDICATOR HOLDER SRD – 101

A powerful permanent magnetic type base holds firmly any steel or iron surface horizontally, vertically or up-side down, thus eliminating time spent on clamping indicator to machine. A convenient large diameter push button turns magnetic pull 'on' or 'off' for quick one hand set up and removal of base. The base and two sides are energized for attachment to flat surfaces and a V slot facilitates gripping on curved surfaces.

An improved model with a versatile clamping assembly which can hold any plunger type of dial indicator available in Metric as well as English System and can easily hold any lever type of dial indicators with 6 mm, 8 mm i.e, 1 / 4" and 5 / 16 "

SPECIFICATIONS:

HEIGHT OF COLUMN	185 mm
L * W * H OF BASE	48 * 43 * 49 mm
MAGNETIC PULL	45 kg

SRD – 105 WITH SWEVEL JOINT

Here is the new Kumaun Magnetic Base Indicator Holder that shortens time on all set – up, checking and inspection jobs requiring dial indicators.

It is provided with a swivel post assembly for universal adjustment by means of a ball joint attaching it to the magnetic base and upper friction joint that allows arm to swing through more that 180-degree of arc. Plus features include a slot in the ball joint tensioning cap that permits swivel post to be bent up to 90 degree from that vertical position and a fine adjusting screw for accurate final setting of the indicator.

KUMAUN
MAGNETIC BASE



KUMAUN

MAGNETIC BASE KM – 525

A powerful permanent magnetic type base holds firmly to any steel or iron surface, horizontally, vertically or up side down, this eliminating time spent on clamping indicator to machine. When magnet is turned 'ON ' by the lever, the base and two sides are energized for attachment on flat surfaces and a ' V ' slot facilitates gripping of the cylindrical shafts.

SALIENT FEATURES

Accepts all unique dial indicator stem. ' ON ' & ' OFF ' lever releases the magnetic base from the work piece without damaging the surface.

SPECIFICATIONS:

BASE	50 * 50 * 60 mm
MAIN CLOUMN	12.5 mm O.D. 175 mm L
EXTERSION ARM	8 mm * 150 mm L
MAGNETIC PULL	80 kg (175 lbs)

KM – 527

Base is similar to KM – 525 in dimensions but special feature provided in this model is a fine attachment assembly fitted on extension arm 10 mm diameter and 175 mm length for quick setting of dial indicator at a desired position

KUMAUN
MAGNETIC BASE



KUMAUN

MAGNETIC BASE KM – 5250

A powerful permanent magnetic type base holds firmly to any steel or iron surface, horizontally, vertically or up side down, this eliminating time spent on clamping indicator to machine. When magnet is turned 'ON 'by the lever, the base and two sides are energized for attachment on flat surfaces and a 'V 'slot facilitates gripping of the cylindrical shafts.

SALIENT FEATURES

Accepts all unique dial indicator stem 'ON'&'OFF' lever releases the magnetic base from the work piece without damaging the surface.

SPECIFICATIONS:

BASE	L60 x W50 x H55 mm
MAIN CLOUMN	DIA12 mm x L175 mm
EXTERSION ARM	DIA 10 mm x 150 mm L
MAGNETIC PULL	80 kg (175 lbs)

KM – 5270

Base is similar to KM – 5250 in dimensions but special feature provided in this model is a fine attachment assembly fitted on extension arm 10 mm diameter and 175 mm length for quick setting of dial indicator at a desired position.

KUMAUN

MAGNETIC BASE WITH ARTICULATED ARM



KUMAUN

MAGNETIC BASE WITH ARTICULATED ARM KM – 530 KM – 730

A model range 3 – D measurement, articulated stand with unlimited adjustment. A mechanical central clamping system with one lock mechanism (All joint locks). Maintenance free and has micro fine adjustment for dial gauges and feelers. A well – planned model, guarantees individual field of application.

SPECIFICATIONS:

	KM - 530	KM - 730
L W H	60X50X55	75X50X65
ARM LENGTH	300MM	390MM

KUMAUN

HEAVY DUTY MAGNETIC BASE



KUMAUN

HEAVY DUTY MAGNETIC BASE KM - 635

This model utilizes a heavy base unit and the massive rigid fittings make it suitable for use with larger dial gauges. A fine adjustment screw is provided and maximum magnetic performance gives security even on rough surfaces. The base and two) sides are energized for attachment to flat surfaces and a 'V slot facilitates gripping on curved surfaces. Universal movement of crossbar is controlled by one screw.

SPECIFICATIONS:

HEIGHT OF COLUMN	230 mm
DIAMETER OF COLUMN	22 mm
LENGTH OF BASE	63 mm
WIDTH OF BASE	63 mm
HEIGHT OF BASE	75 mm
MAGNETIC PULL	90 kg

KUMAUN

HEAVY DUTY MAGNETIC BASE



KUMAUN

HEAVY DUTY MAGNETIC BASE KM – 725

A powerful permanent magnetic type base holds to any steel or iron surface - horizontally, vertically or up side down, thus eliminating time spent on clamping indicator to machine. When magnet is turned 'ON' by the knob, the base remains firmly clamped in any desired position. The base and two sided energized for attachment on flat surfaces and a 'V' slot facilitates gripping of the stand of shafts with a diameter range of 20 to 120 mm. The unique clamping which can hold dial indicator 8 mm or 5/16" stem diameter simple and quick setting is obtained by a new clamping of the extension arm, which guarantees absolutely rigid clamping even with moderate tightening. Magnet should be turned "OFF" when not in use.

SPECIFICATIONS:

HEIGHT	275 mm
LENGTH OF BASE	73 mm
WIDTH OF BASE	50 mm
HEIGHT OF BASE	64 mm
MAGNETIC PULL	100 kg

KUMAUN

EXTRA HEAVY DUTY MEASURING STAND WITH MAGNETIC BASE



KUMAUN

EXTRA HEAVY DUTY MEASURING STAND WITH MAGNETIC BASE

[With fine adjustment] KM – 785

The very powerful magnet is switched on by means of a turning switch. The stand will stay in any position that the stand can be used on flat surfaces, but the magnet is also provided with a prism at one side next to the column so that it can be fixed to circular parts.

SPECIFICATIONS:

LENGTH OF BASE	75 mm
WIDTH OF BASE	60 mm
TOTAL HEIGHT WITH BASE	360 mm
DIAMETER OF COLUMN	25 mm
DEPTH OF THROAT	250 mm
MAGNETIC PULL	120 kg

KUMAUN
UNIVERSAL MAGNETIC STAND



KUMAUN

UNIVERSAL MAGNETIC STAND KM - 637 (with V block)

The instrument is mainly used on machine tools for checking true running on iron plates, surface plates as well as for general checking operations. The base can also be used as a Magnetic - V - Block to hold arbors checking tapers and parallelism.

SALIENT FEATURES

Can be used as a Magnetic Stand as well as a Magnetic V-Block. Proper clamping can be done by use of large knobs. Dial clamping dia is 5/16" or 8 mm. A small setting screw is provided for fine adjustment. A powerful magnet is in the base. On/Off switch is provided on the magnetic base. The base has four adhesion faces and V - groove for mounting arbors ranging 20 dia to 150 dia.

SPECIFICATIONS:

L*W*H OF BASE	65 * 56 * 70	mm
MAIN COLUMN	18 * 200	mm
EXTENSION ARM	18 * 220	mm
MAGNETIC PULL	90	kg

KUMAUN

FLEX - O - POST MAGNETIC BASE INDICATOR HOLDER



KUMAUN

FLEX - O - POST MAGNETIC BASE INDICATOR HOLDER SRD – 101 F

The 'KUMAUN' Magnetic Base is also available with a 'FLEX - O - POST' indicator Holder. Short tubular sections obtain complete flexibility with precision ball joints linked by a steel cable. The flexible post can be adjusted to practically any desired position and locked lever at the base of the post. This complete flexibility permits use of the indicator in awkward hard to reach position which are impossible to reach by conventional indicator holding devices. A unique Fine Adjustment is provided at the base at desired position. Supplied in two types:

1) Push Button Model 2) ON / OFF Switch model

SPECIFICATIONS:

SRD - 101 F

L*W*H OF BASE	51 * 45 * 45 mm
FLEX – O POST HEIGHT	315 mm

KM – 525 F

L*W*H OF BASE	60 * 50 * 50 mm
FLEX – O – HEIGHT	350 mm

KM – 635 F

L*W*H OF BASE	74 * 68 * 63 mm
FLEX – O – POST HEIGHT	465 mm

KM – 725 F

L*W*H OF BASE	73 * 50 * 64 mm
FLEX – O – POST HEIGHT	440 mm

KUMAUN
MAGNETIC VICE



KUMAUN

MAGNETIC VICE KM - 730, KM - 739

The "Kumaun" Magnetic Vice ensures a distortion free use. This Vice assures the square holding of the component and thus the set up time is minimized.

SPECIAL FEATURES:

Flatness, Square ness, & Parallelism - 0.005 mm
Permanent powerful magnet with ON – OFF switch
All surfaces are precision ground
Vertical 'v' in movable jaw

SPECIFICATIONS:

CAT. NO.	SIZE
KM - 730	150 * 115 * 75
KM - 739	200 * 125 * 85

KUMAUN

V - BLOCK HARDENED (with clamp)



KUMAUN

V – BLOCK HARDENED (with clamp)

The V – Blocks have two V – angles of different size to take parts of varying dimensions. By means of the clamp the Work can be held tight in the block. The accuracy of the vee block/100mm is within 0.005 mm.

SPECIFICATIONS:

CAT NO.	L * W * H	CLAMPING RANGE
SH-444	050 * 040 * 040mm	05-30 mm
SH-445	075 * 060 * 060mm	06-50 mm
SH-446	100 * 080 * 080mm	06-70 mm
SH-448	070 * 140 * 140mm	10-125mm
SH-449	150 * 200 * 200mm	10-150mm
SH-450	200 * 200 * 200mm	10-200mm

V-BLOCKS CAN BE SUPPLIED WITH 120 DEGREE ANGLE.

KUMAUN

V- BLOCK HARDENED (UNIVERSAL) (with clamp)



KUMAUN

V – BLOCK HARDENED (UNIVERSAL) (with clamp) SH - 447

Hardened and ground on all working surfaces to an accuracy within 0.005 mm.

SPECIFICATIONS:

CAT NO. SH - 447

CLAMPING RANGE 5 - 50 mm
L*W*H 70 * 50 * 60 mm

KUMAUN

TOOLMAKERS PARALLEL CLAMP



KUMAUN

TOOLMAKERS PARALLEL CLAMPS

KM – 401, KM – 402, KM – 403, KM – 404, KM – 405

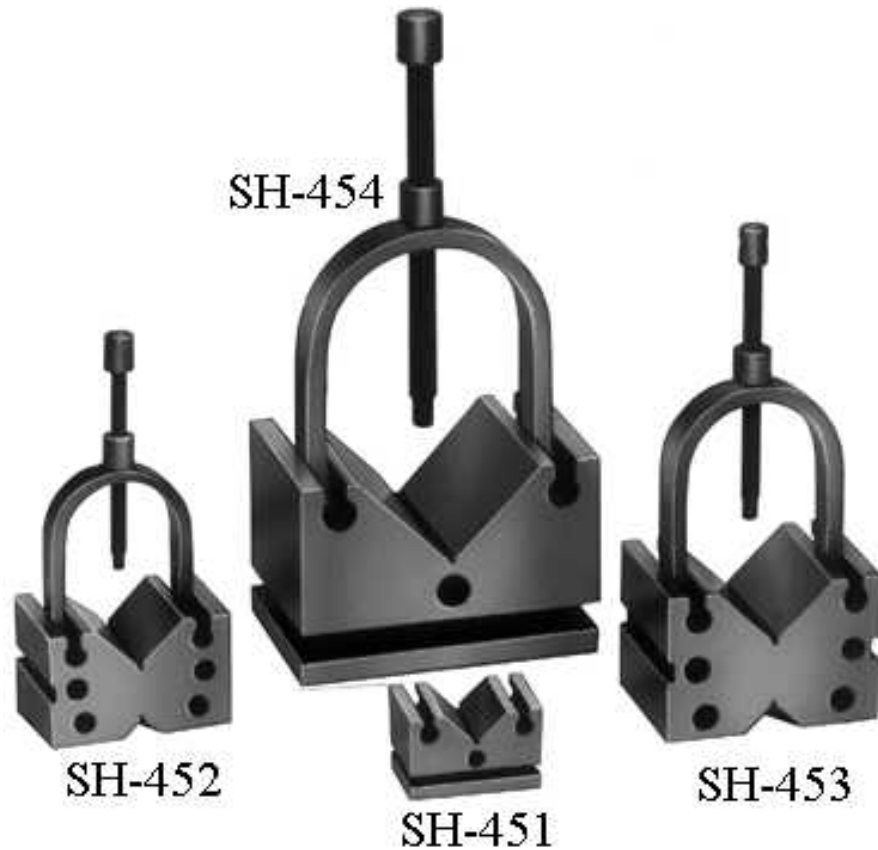
Steel case hardened. Ends of jaws chamfered to facilitate clamping under shoulder or in recess. Clip holds loose jaw in position when clamp screw is released.

SPECIFICATIONS:

CAT.NO.	LENGTH OF JAW	OPENING
401	1.5" (38 mm)	5/8" (17 mm)
402	2" (51 mm)	1" (25 mm)
403	3" (75 mm)	1.5/8" (41 mm)
404	4" (102 mm)	2.5" (64 mm)
405	5" (127mm)	3.5" (89 mm)

KUMAUN

UNIVERSAL HARDENED VEE BLOCK



KUMAUN

UNIVERSAL HARDENED VEE BLOCKS

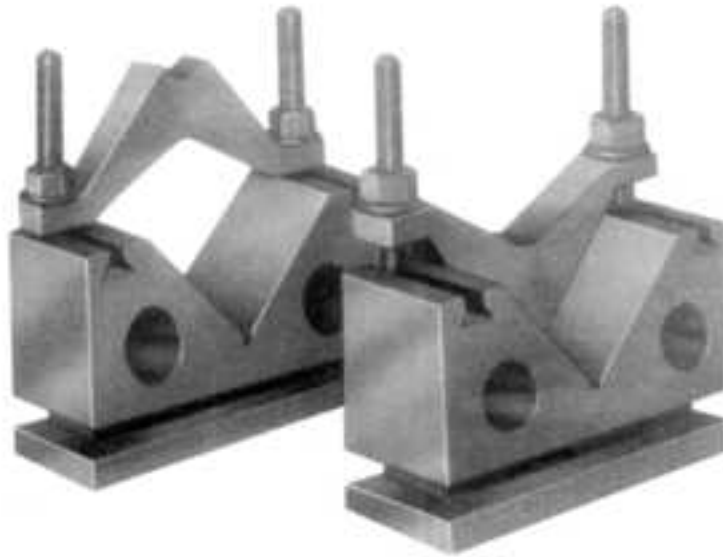
SH 451, SH - 452, SH - 453, SH - 454

The 'V' Blocks have two 'V' angles of different sizes to take jobs of different measurements. The clamps help the work to be held rigidly to the 'V' block. The top V and the bottom V are parallels with +/- 3 micron and its square ness to the end faces and the height variation to the V Block in pair is within +/- 3 microns.

SPECIFICATIONS:

CAT NO.	SIZE	CLAMPING RANGE
SH - 451	63 * 40 * 40 mm	3 - 25 mm
SH - 452	80 * 57 * 57 mm	5 - 50 mm
SH - 453	107 * 75 * 75 mm	5 - 65 mm
SH - 454	150 * 100 * 100 mm	5 - 85 mm

KUMAUN
HARDENED VEE BLOCKS



KUMAUN

HARDENED VEE BLOCKS SH- 455, SH- 456

These hardened vee blocks come with these special inbuilt features:

'V' blocks are hardened and ground to 60+2 HRC

Precision 'V' Blocks for Tool Room, Inspection Work, Assembly Shop, Marking

All sides precision ground, parallel and square

'V' groove ground central and parallel 2 sides and base perfect aligned in matched pair

Supplied with special clamp for holding job

Hold square and round work

SPECIFICATIONS:

Cat No.	Size	Range
SH- 455 [4"v-b]	175 * 100 * 65 mm	5-125 mm
SH- 456 [5"v-b]	200 * 125 * 75 mm	5-150 mm

KUMAUN
ROLLER BEARING 'V' BLOCK



KUMAUN

ROLLER BEARING 'V' BLOCK

Used for checking heavy and odd shaped round jobs.

Perfectly matched pair having accuracy 0.005 mm

Included angle of rollers is 90°

Standard bearings are used which are replaceable

Jobs don't get damaged due to bearing on top

SPECIFICATIONS:

Cat No.	Sizes mm.	Range mm.	Load
	Lx W x H		Capacity Kg
SH - 888	150 x 60 x 100	Ø3 - Ø 55	1,000

SPECIAL SIZES ARE AVAIBLE ON REQUEST

KUMAUN

MAGNETIC SQUARE BLOCK WITH 2 - Vees



KUMAUN

MAGNETIC SQUARE BLOCK WITH 2 – Vees MRM – 777, MRM – 999

This Magnetic Square Block with 2 Vees has some special built in features, which enable smoother and easier utility:

Permanent power magnet

ON – OFF switch

Ideal for holding round as well as odd shapes

All surfaces and vees are precision ground

3 faces, top and both sides are magnetized

Accuracy for flatness parallelism and square ness is within 0.005 mm

SPECIFICATIONS:

CAT NO.

SIZE

MRM – 777

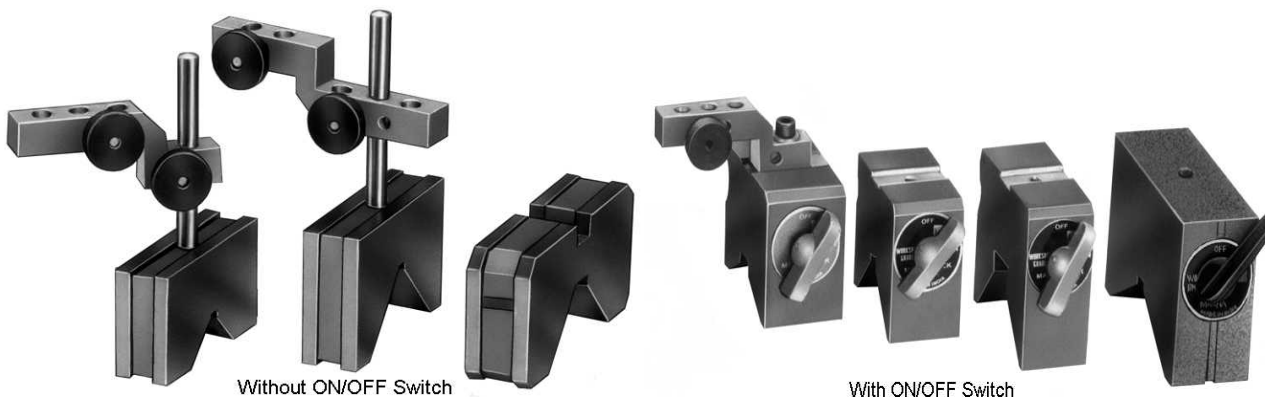
100 * 100 * 100 mm

MRM – 999

150 * 150 * 150 mm

KUMAUN

MAGNETIC V - BLOCK SPECIAL FOR BORING BAR



KUMAUN

MAGNETIC V - BLOCK SPECIAL FOR BORING BAR

These Boring tool devices are used to set boring tool to the exact diameter on boring machines and machine tools with rotation boring tools. Because of their magnetic bases, they can be held directly on boring spindle. The clamps can fit at any desired position whereby any particular bore size can be set on the device. These devices have ON / OFF switches, as per requirements and aid in holding the job on boring spindle. The ' V ' slot is ground to 5micron accuracy.

SPECIFICATIONS:

CAT. NO.	SIZE [L W H]	CLAMPING RANGE DIA. IN MM
----------	--------------	---------------------------

[Without ON / OFF switch]

KM - BSD - 201	70 * 22 * 40 mm	10 TO 60
KM - BSD - 202	75 * 22 * 50 mm	10 TO 85

[With ON / OFF switch]

KM - BSD - 203	50 * 28 * 60 mm	10 TO 50
KM - BSD - 204	60 * 30 * 60 mm	10 TO 60
KM - BSD - 205	65 * 35 * 60 mm	10 TO 70
KM - BSD - 206	75 * 35 * 70 mm	10 TO 90
KM - BSD - 207	70 * 40 * 60 mm	15 TO 105
KM - BSD - 208	90 * 40 * 70 mm	15 TO 120
KM - BSD - 209	120 * 40 * 90 mm	15 TO 150

THE V – ANGLE CAN BE FURNISHED IN 90 DEGREE AND 120 DEGREE AS PER REQUIREMENT.

KUMAUN

MAGNETIC SQUARE BLOCK [IN PAIR]



KUMAUN

MAGNETIC SQUARE BLOCK [IN PAIR]

MRM – 700, MRM – 900

These blocks are designed to hold the steel components in desired fixed position during welding marking grinding etc. These are extremely useful in Tool – Room in the assembling of jigs and fixtures and are also utilized with Sine table for inspection of components. They are also used as magnetic parallels as the pair are matched with +/- 5 micron. In bigger sizes an ON – OFF switch is also provided.

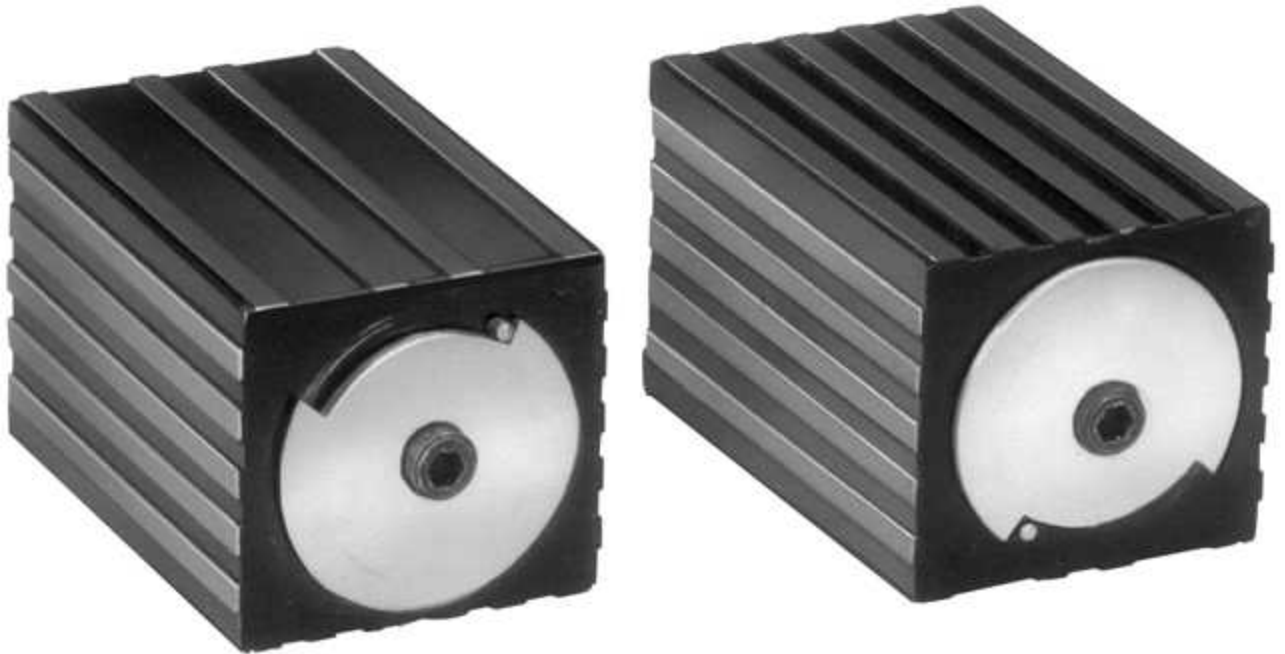
SPECIFICATIONS:

TYPE	SIZE
MRM – 700	100 * 70 * 70 MM
MRM - 900	150 * 80 * 80 MM

The MRM – 700 H and MRM- 900 H are also available. These have the same specifications as the MRM 700 and the MM 900 but the additional lining of hardened steel plates ensures the extra wear resistibility

KUMAUN

MAGNETIC SQUARE BLOCK [IN PAIR]



KUMAUN

MAGNETIC SQUARE BLOCK [IN PAIR]

MRM – 700H, MRM – 900H

These blocks are designed to hold the steel components in desired fixed position during welding marking grinding etc. These are extremely useful in Tool – Room in the assembling of jigs and fixtures and are also utilized with Sine table for inspection of components. They are also used as magnetic parallels as the pair are matched with ± 5 micron. In bigger sizes an ON – OFF switch is also provided.

SPECIFICATIONS:

TYPE

SIZE

MRM - 700H

100 * 70 * 70 MM

MRM - 900H

150 * 80 * 80 MM

KUMAUN

MAGNETIC V BLOCK



KUMAUN

MAGNETIC V BLOCK

MRM – 475, 475 H, 575, 575H, 676, 676H, 856, 856H, 876, 876H, 976, 976H

These Magnetic –Vee blocks are invaluable and versatile in tool – making and inspection, in quality control and tool – room. Due to their extremely high magnetic power they can be used for drilling and grinding (both wet and dry) and even for light milling work.

The - Blocks have a total of three magnetic surfaces. Top and bottom each with 90-degree v – angle and end surface opposite from switch. All three magnetic surfaces as well as the two sides are carefully ground. Their accuracy for flatness, parallelism and square ness is within 0.005 mm or 0.0002 inches for all work, which requires accurate positioning.

When turned 'ON ' all three magnetic surfaces are activated simultaneously. The permanent magnet holds the work firmly in the V and the block holds itself firmly on a ferrous surface. Coolants or other fluids cannot damage the magnetic system, being shielded from penetration of moisture.

SPECIFICATIONS:

CAT NO.	SIZE		CLAMPING CAPACITY	MAGNETIC EFFICIENCY
MRM – 475	55 * 50 * 60	mm	5 – 35 mm	50 kg
MRM – 475 H	55 * 50 * 60	mm	5 – 35 mm	50 kg
MRM – 576	75 * 65 * 85	mm	5 – 55 mm	75 kg
MRM – 576 H	75 * 65 * 85	mm	5 – 55 mm	75 kg
MRM – 676	100 * 75 * 95	mm	5 – 65 mm	150 kg
MRM – 676 H	100 * 75 * 95	mm	5 – 65 mm	150 kg
MRM – 856	150 * 85 * 100	mm	8 – 80 mm	250 kg
MRM – 856 H	150 * 85 * 100	mm	8 – 80 mm	250 kg
MRM – 876	150 * 125 * 125	mm	10 – 120 mm	350 kg
MRM – 876 H	150 * 125 * 125	mm	10 – 120 mm	350 kg
MRM – 976	200 * 150 * 150	mm	10 – 150 mm	450 kg
MRM – 976 H	200 * 150 * 150	mm	10 – 150 mm	450 kg

WE ALSO MANUFACTURE V – BLOCKS IN 120-DEGREE ANGLE AS PER DEMAND.

V – BLOCKS OF 60-DEGREE ANGLE ARE IN DEVELOPING STAGE AND WILL LAUNCHED SOON.

KUMAUN

MAGNETIC ADJUSTABLE LINK KM – 660

'KUMAUN' Magnetic Adjustable Link is a twin unit possessing a multi angle capability. It can be quickly locked at an angle by the turn of wing nut, thus providing the simplest and most rapid means of clamping together.

SPECIFICATIONS:

OVERALL LENGTH	125 mm
OVERALL WIDTH	50 mm
MAGNETIC PULL ON EACH RECTANGULAR SIDE	15 kg



KUMAUN

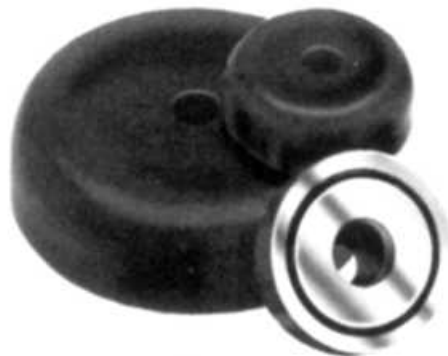
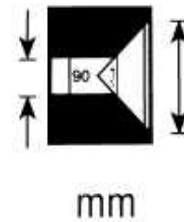
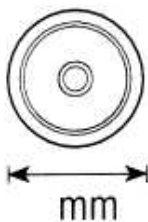
SHALLOW POT MAGNETS

Designed for applications where height is too restricted for conventional deep pot magnets. Magnets used NdFeB.

Cat No.	801	802	803
---------	-----	-----	-----

Dia * Th.	20 * 8	30 * 9	40 * 11
-----------	--------	--------	---------

Mag. Pull	05kg	10kg	20kg
-----------	------	------	------





KUMAUN

ALNICO POT MAGNETS

KM – 731, KM – 732, KM – 733, KM – 734

Used on similar application as Button Magnets, but are more powerful. Pot made up on mild steel with brass spacer and Magnet Alnico V.

CAT NO.	DIAMETER	HEIGHT
731	17.5 mm	16 mm
732	20.5 mm	19 mm
733	27 mm	25 mm
734	35 mm	30 mm

KUMAUN

MAGNETIC HOLD FAST

KM – 735, KM – 736, KM – 737.

This is a range of work holding and work-handling pot magnets where positive grip is necessary but not attractive from a distance. As a result of an exceptionally strong grip, each hold fast is equipped with a screw down releasing handle, which can also be used as a carrying handle.

SPECIFICATIONS:

CAT No.	SIZE
MRM – 735	DIA – 55 * 50 H
MRM – 736	DIA – 70 * 65 H
MRM – 737	DIA – 100 * 75 H





KUMAUN MAGNETIC SQUARE KM-664

Two magnetic holders link together, provide a means of mounting work pieces at right angle, having accuracy of 5 micron. Provides facilitate assembly procedures or operations such as welding.

SPECIFICATIONS:

Size: L = 150 * 150 mm W = 25 mm

MAGNETIC PULL: 60 Kg



KUMAUN

MAGNETIC KNEE MRM -745

This Magnetic Knee or holder is designed to hold work magnetically for Inspection as well as layout work. It is very useful for holding odd shaped parts for grinding, as it has a large magnetic surface of 100 * 275 mm precision ground. The accuracy for flatness parallelism and square ness is within 0.005 mm

SPECIFICATIONS:

Size: 170mm L * 100 mm W * 135 mm H

MAGNETIC PULL: 200 KG



KUMAUN

MAGNETIC HOLDER



KUMAUN

MAGNETIC HOLDER KM – 695

“KUMAUN“ Magnetic Holder has instant grip at the turn of a handle. It is effective in securing iron and steel sheets, bars or tubes on machines bet or any other flat ferrous base. This can be used in tool room, shop floor, inspection department, assembly shop and has unlimited applications in welding shop.

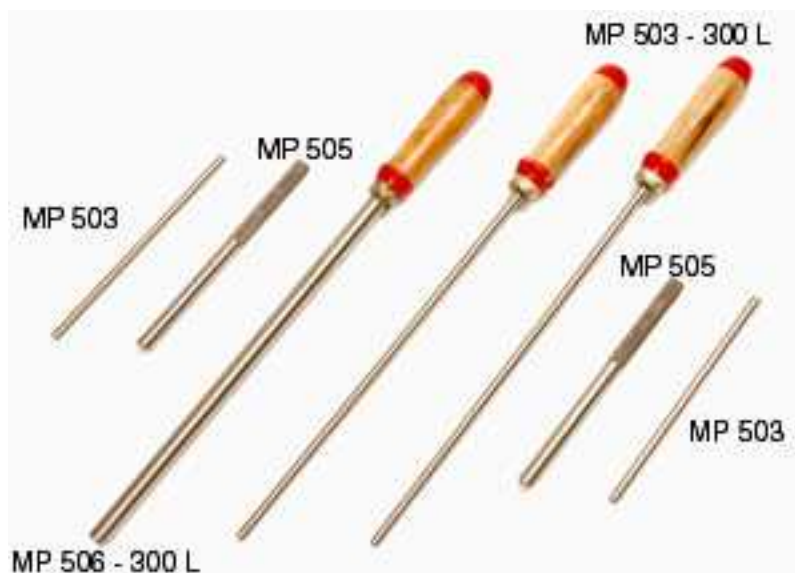
The Magnetic Holder is a compact unit housing powerful permanent magnet and cannot be demagnetized unless it is dismantled. (This should not be attempted in any case). Its maintenance requirements are limited to occasional oiling and regrinding of the magnetic contracting faces, which should be flat and smooth to ensure maximum holding power. Any welding splash can be removed with a smooth file.

SPECIFICATIONS:

OVERALL DIMENSIONS	108 * 108 * 140 mm
MAGNETIC PULL ON PLAIN SURFACE	125 kg
MAGNETIC PULL ON 'V'SURFACE	100 kg

KUMAUN

MAGNETIC PENCIL



KUMAUN

MAGNETIC PENCIL

'KUMAUN' magnetic pencil is very useful for removing steel particles from blind holes and useful for assembly & maintenance work for removing steel parts lying in oil tanks.

'KUMAUN' magnetic pencil is compact unit embodying powerful NdFeB magnets assembled in stainless steel pots, which are designed for lifting operations.

Connecting extension can increase length.

SPECIFICATIONS:

Cat No.	Sizes mm.
MP 501	Dia 3 x 150 L
MP 502	5 x 150 L
MP 503	6 x 150 L
MP 504	8 x 150 L
MP 505	10 x 150 L
MP 506	12 x 150 L
MP 507	14 x 150 L
MP 508	15 x 150 L
MP 509	16 x 150 L
MP 510	18 x 150 L
MP 511	20 x 150 L

KUMAUN

PERMANENT MAGNETIC LIFTER



KUMAUN

PERMANENT MAGNETIC LIFTER

"KUMAUN" brand permanent magnetic lifters are compact in design. Our designs are more parallel to international products. The self-contained permanent magnet maintains its holding power indefinitely. Magnets used in our lifters are of high standards.

These lifters does not require any external electric supply so no hanging wires and switches. The field of the permanent magnet is controlled by the "ON - OFF" position of the safety handle. There is no danger of accident due to failure of electric supply.

Lifting magnets require good surface conditions to achieve maximum lifting. Ground or machined surfaces are ideal, but a good clean surface or a forging or casting is acceptable provided sufficient flat area is available for magnet contact with work piece.

Recommended lifting capacity is for flat, ground clean ferrous plates de-rated by a factor of three. The safety factor is required due to such variables as surface condition, contact area, alloy content and material thickness and may need to be increased if conditions are particularly adverse.

Every permanent magnetic lifter comes along with third party inspection report.

Higher lifting capacity is available on request.

Factor of safety is 1: 3

Always ensure the cleanliness of the contact surface of both lifter and the material to be lifted.

No electrical supply is needed due to permanent magnets.

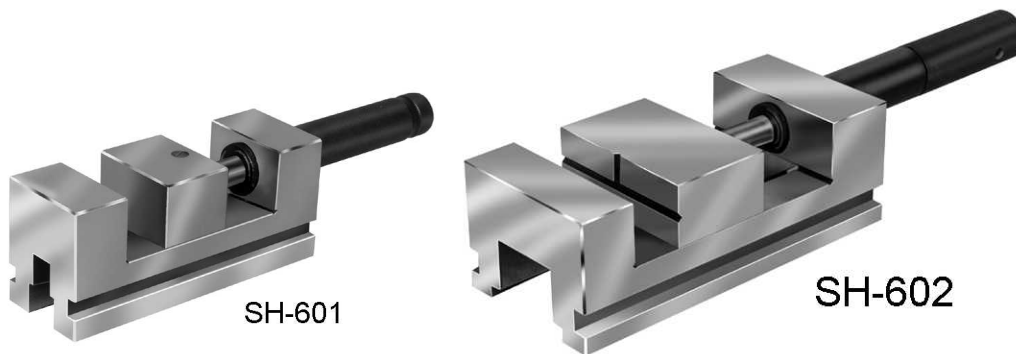
SPECIFICATIONS:

Cat No	Size in mm.	Lifting Capacity	Tested Capacity
MRM - 698 ML	L110 x W70 x H80	100Kgs	300Kgs
MRM - 699 ML	L200 x W90 x H80	200Kgs	600Kgs
MRM - 700 ML	L220 x W90 x H100	300Kgs	900Kgs
MRM - 701 ML	L230 x W105 x H105	500Kgs	1500Kgs
MRM - 702 ML	L325 x W135 x H145	1000Kgs	3000Kgs
MRM - 703 ML	L385 x W165 x H170	1500Kgs	4500Kgs
MRM - 704 ML	L470 x W170 x H190	2000Kgs	6000Kgs

SPECIAL SIZES ARE AVAILBLE ON REQUEST.

KUMAUN

PRECISION GRINDING VICE



KUMAUN

PRECISION GRINDING VICE

For high accuracy light machining, grinding, inspection or making out of precision components. Vice can be used, standing on its base, sides, end or top. Guaranteed +/- 0.005 mm for Parallelism, & Square ness with the vice in any position. Manufactured from high-grade oil hardening steel, hardened & tempered to ensure stability & accuracy throughout the units working life.

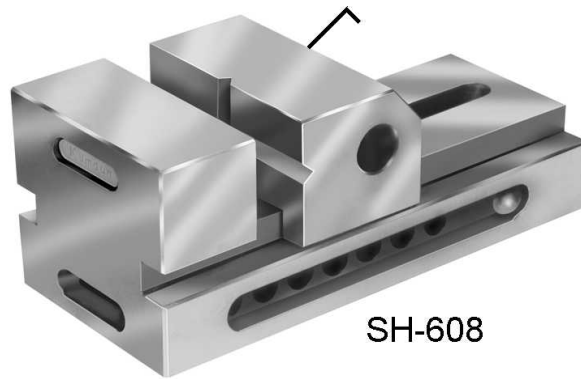
SPECIFICATIONS:

Cat. No.	Size In mm	Clamping Range	Accuracy
SH-600	112 x 60 x 50	0-50 mm	0.005 μm
SH-601	150 x 50 x 65	0-50 mm	0.005 μm
SH-602	185 x 75 x 75	0-75 mm	0.005 μm
SH-603	220 x 90 x 80	0-100 mm	0.005 μm
SH-604	245 x 100 x 80	0-125 mm	0.010 μm
SH-605	270 x 120 x 100	0-150 mm	0.010 μm
SH-606	300 x 135 x 100	0-165 mm	0.010 μm

SPECIAL SIZES AVAILABLE ON REQUEST

KUMAUN

ANGULAR TIGHTENING GRINDING VICE



KUMAUN

ANGULAR TIGHTENING GRINDING VICE

For high accuracy light machining, grinding, inspection or making out of precision components. Vice can be used, standing on its base, sides, end or top. Guaranteed +/- 0.005 mm for Parallelism, & Square ness with the vice in any position. Manufactured from high-grade oil hardening steel, hardened & tempered to ensure stability & accuracy throughout the units working life.

SPECIFICATIONS:

Cat. No.	Size In mm.	Clamping Range	Accuracy
SH-607	150 x 50 x 50	0-50 mm	0.005 μ m
SH-608	175 x 65 x 65	0-75 mm	0.005 μ m
SH-609	200 x 90 x 80	0-100 mm	0.005 μ m
SH-610	225 x 100 x 80	0-125 mm	0.010 μ m
SH-611	250 x 120 x 100	0-150 mm	0.010 μ m

SPECIAL SIZES AVAILABLE ON REQUEST

KUMAUN

MAGNETIC SINE TABLE



KUMAUN

MAGNETIC SINE TABLE

Used for Precision measurement, setting of angles & Light machining

Accuracy for Square ness, Flatness & Parallelism
within 0.005mm up to 200L & 0.010mm up to 450L

Angle can be set within ± 5 seconds

Centre Distance between rollers is within 0.005mm

Made from high quality alloy steel

Hardness - 60 ± 2 Rc & Tempered

Magnetic Table for job holding

Firm hinged clamp to reduce possibility of distortion

SPECIFICATIONS:

Cat. No	Size (mm)	Center Distance	Inclination
SH-301MST	150 L x 120 W x 105 H	70 mm	0 - 45°
SH-302MST	250 L x 150 W x 105 H	100 mm	0 - 45°
SH-303MST	300 L x 150 W x 105 H	100 mm	0 - 45°
SH-304MST	450 L x 150 W x 105 H	100 mm	0 - 45°
SH-305MST	500 L x 200 W x 105 H	150 mm	0 - 45°

KUMAUN

SINE VICE



KUMAUN

SINE VICE

Used for Precision measurement, setting of angles, Right angle grinding & light machining.

Made from high quality alloy steel.

Accuracy for square ness, flatness & parallelism within $\pm 0.005\text{mm}$

Angular accuracy within ± 5 seconds

Centre distance between rollers is between $\pm 0.005\text{mm}$

Hardness - 60 ± 2 Rc & Tempered

SPECIFICATIONS:

Cat No.	Size (mm)	Center Distance	Opening (mm)
SH-201SV	215L x 61W x 93H	100	80
SH-202SV	265L x 76W x 120H	150	110
SH-203SV	305L x 96W x 133H	150	125
SH-204SV	333L x 126W x 163H	200	145
SH-205SV	285L x 220W x 154H	200	150

KUMAUN

INSPECTION STEEL PARALLEL IN PAIR



KUMAUN

INSPECTION STEEL PARALLELS IN PAIRS FOR ACCURACY FOR WIDTH AND THICKNESS WITHIN

NOTE: Other specific sizes as per the customers' requirement will be catered in **GRADE 'A'** and **GRADE 'B'** category

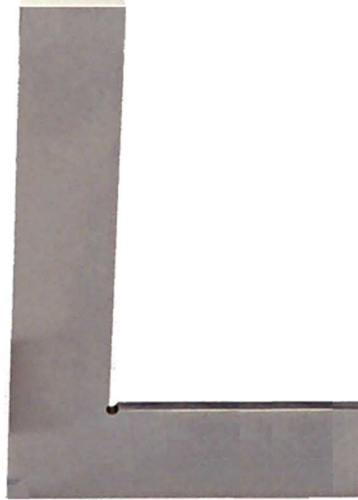
GRADE 'A'

CAT. NO.	LWH
SH - A 1001	100 * 10 * 5
SH - A 1002	100 * 20 * 10
SH - A 1003	150 * 15 * 10
SH - A 1004	150 * 20 * 15
SH - A 1005	150 * 30 * 20
SH - A 1006	200 * 30 * 20
SH - A 1007	200 * 40 * 25
SH - A 1008	200 * 50 * 30
SH - A 1009	250 * 40 * 25
SH - A 1010	250 * 50 * 30
SH - A 1011	250 * 60 * 40
SH - A 1012	300 * 50 * 25
SH - A 1013	300 * 60 * 30
SH - A 1014	300 * 70 * 40
SH - A 1015	400 * 50 * 50
SH - A 1016	400 * 75 * 50
SH - A 1017	400 * 100 * 50
SH - A 1018	450 * 50 * 50
SH - A 1019	450 * 75 * 50
SH - A 1020	450 * 100 * 50

GRADE 'B'

CAT. NO.
SH - B 1001
SH - B 1002
SH - B 1003
SH - B 1004
SH - B 1005
SH - B 1006
SH - B 1007
SH - B 1008
SH - B 1009
SH - B 1010
SH - B 1011
SH - B 1012
SH - B 1013
SH - B 1014
SH - B 1015
SH - B 1016
SH - B 1017
SH - B 1018
SH - B 1019
SH - B 1020

KUMAUN
HARDENED AND GROUND TRI – SQUARE



KUMAUN

HARDENED AND GROUND TRI – SQUARE FLAT EDGE WITHOUT STOCK

These tri squares come with these special inbuilt features:

Made from single piece of fully seasoned, fine quality steel.

Squares having accurate right angles both inside & outside.

Beam & blade are accurately lapped for straightness & parallelism.

All squares are fully hardened to 58 (+-2) Rc.

Beam is grooved at inner corner for clearance of burns & dirt.

Packed in individual wooden box.

SPECIFICATIONS:

Cat No.	Sizes mm. L x W x T
SH – 1002	50 x 30 x 4
SH – 1003	75 x 30 x 4.50
SH – 1004	100 x 70 x 5
SH – 1006	150 x 100 x 6
SH – 1008	200 x 140 x 7
SH – 1010	250 x 165 x 8
SH – 1012	300 x 200 x 8
SH – 1016	400 x 250 x 10

KUMAUN

HARDENED AND GROUND TRI – SQUARE



KUMAUN

HARDENED AND GROUND KNIFE EDGE (BEVELLED EDGE) TRI – SQUARE

These tri squares come with these special inbuilt features:

Made from single piece of fully seasoned, fine quality steel.

Squares having accurate right angles on both sides.

Beam & blade are accurately lapped for straightness & parallelism.

All squares are fully hardened to 58 (+-2) Rc.

Beam is grooved at inner corner for clearance of burns & dirt.

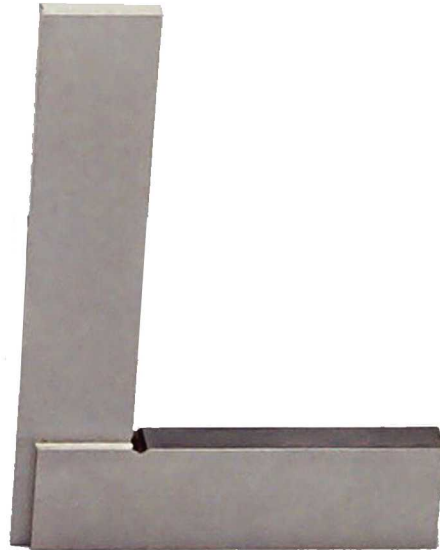
Blades are beveled on each side.

SPECIFICATIONS:

Cat No.	Sizes mm
	L x W x T
SH – 2002	50 x 30 x 4
SH – 2003	75 x 30 x 4.50
SH – 2004	100 x 70 x 5
SH – 2006	150 x 100 x 6
SH – 2008	200 x 140 x 7
SH – 2010	250 x 165 x 8
SH – 2012	300 x 200 x 8
SH – 2016	400 x 250 x 10

KUMAUN

HARDENED AND GROUND TRI – SQUARE WITH STOCK



KUMAUN

HARDENED AND GROUND TRI – SQUARE WITH STOCK

These tri squares come with these special inbuilt features:

Made from two pieces of fully seasoned, fine quality steel.

Squares having accurate right angles on both sides.

Beam & blade are accurately lapped for straightness & parallelism.

All squares are fully hardened to 58 (+-2) Rc.

Beam is grooved at inner corner for clearance of burns & dirt.

SPECIFICATIONS:

Cat No.	Sizes mm L x W x T
SH – 3004	100 x 070 x 10
SH – 3006	150 x 100 x 12
SH – 3008	200 x 140 x 15
SH – 3010	250 x 165 x 20
SH – 3025	300 x 200 x 20
SH – 3016	400 x 250 x 25
SH – 3020	500 x 300 x 25
SH – 3028	700 x 450 x 30
SH – 3040	1000 x 750 x 40

KUMAUN
STRAIGHT EDGE



KUMAUN

STRAIGHT EDGE

Made from high resistant steel.

Contact surface precision ground and lapped.

Fully hardened up to 58 Rc up to 300 mm length & above 300 mm length Working Edges are hardened to 58 Rc.

SPECIFICATIONS:

Cat No.

Sizes mm.

L W T

SH-1104 SE	100 x 15 x 5
SH-1106 SE	150 x 20 x 8
SH-1112 SE	300 x 35 x 12
SH-1120 SE	500 x 50 x 15
SH-1132 SE	800 x 80 x 20
SH-1140 SE	1000 x 100 x 20

KUMAUN

KNIFE EDGE STRAIGHT EDGE



KUMAUN

KNIFE EDGE STRAIGHT EDGE

Made from high resistant steel.

Contact surface precision ground and lapped.

Fully hardened up to 58 Rc up to 300 mm length & above 300 mm length Working Edges are hardened to 58 Rc.

SPECIFICATIONS:

Cat No.	Sizes mm.
	L W T
SH-1102 KE	50 x 30 x 8
SH-1103 KE	75 x 35 x 8
SH-1104 KE	100 x 40 x 10
SH-1106 KE	150 x 40 x 10
SH-1108 KE	200 x 50 x 12
SH-1110 KE	250 x 50 x 12
SH-1112 KE	300 x 60 x 12
SH-1120 KE	500 x 50 x 15
SH-1124 KE	600 x 60 x 20

KUMAUN DEMAGNETIZER



TABLE TYPE



COIL TYPE

KUMAUN

DEMAGNETIZER

Coil type demagnetizer is designed to operate on alternative current to demagnetize a work-piece. Just pass through the coil and remove it from the field of the demagnetizer. Care should be taken to assure that work-piece is well away from the demagnetizer before the magnetizer is switched OFF. KUMAUN type demagnetizer is very useful for rods, bars, small jobs, etc.

DEMAGNETISER TABLE TYPE

SPECIFICATIONS:

L x W

150 x 100
150 x 150
150 x 225
150 x 300
350 x 350

COIL TYPE DEMAGNETISER

SPECIFICATIONS:

SIZE

Dia 100 bore
Dia 150 bore
Dia 200 bore
Dia 300 bore

KUMAUN

PERMANENT MAGNETIC CHUCK



SI-NEO 1860 MP



SI-NEO 1860 SP

KUMAUN

PERMANENT MAGNETIC CHUCK

This permanent magnetic chuck guarantees outstanding performance and reliability. The rigid assembly of these chucks result in accurate grinding and milling. The selected pole spacing ensures the maximum possible grip on a wide section of work-pieces. Using an additional top plate can accommodate all types, sizes and shapes of work-pieces. The magnet used is 'NdFeB'. This magnet is very powerful than 'AlNiCo' magnet. Under ideal conditions the test result show that the holding power/Cu.Inch is 55Kg., which is much bigger than 'AlNiCo' magnetic chuck.

SPECIFICATIONS:

Cat No.	Sizes inch.	Pole Gap mm
SI - Neo - 1260 SP	300 X 150 X 65	19
SI - Neo - 1460 SP	350 X 150 X 65	19
SI - Neo - 1860 SP	450 X 200 X 70	19
SI - Neo - 1880 SP	450 X 200 X 70	19
SI - Neo - 2080 SP	500 X 200 X 70	19
SI - Neo - 2480 SP	600 X 200 X 70	19
SI - Neo - 2410 SP	600 X 250 X 70	19
SI - Neo - 2412 SP	600 X 300 X 70	19
Cat No.	Sizes inch.	Pole Gap mm
SI - Neo - 1260 MP	300 X 150 X 65	14
SI - Neo - 1460 MP	350 X 150 X 65	14
SI - Neo - 1860 MP	450 X 200 X 70	14
SI - Neo - 1880 MP	450 X 200 X 70	14
SI - Neo - 2080 MP	500 X 200 X 70	14
SI - Neo - 2480 MP	600 X 200 X 70	14
SI - Neo - 2410 MP	600 X 250 X 70	14
SI - Neo - 2412 MP	600 X 300 X 70	14
Cat No.	Sizes inch.	Pole Gap mm
SI - Neo - 1260 CP	300 X 150 X 65	12
SI - Neo - 1460 CP	350 X 150 X 65	12
SI - Neo - 1860 CP	450 X 200 X 70	12
SI - Neo - 1880 CP	450 X 200 X 70	12
SI - Neo - 2080 CP	500 X 200 X 70	12
SI - Neo - 2480 CP	600 X 200 X 70	12
SI - Neo - 2410 CP	600 X 250 X 70	12
SI - Neo - 2412 CP	600 X 300 X 70	12

SPECIAL SIZES ARE AVAILBLE ON REQUEST

KUMAUN

ROUND PERMANENT MAGNETIC CHUCK



KUMAUN

ROUND PERMANENT MAGNETIC CHUCK

'KUMAUN' Introduces the Permanent Magnetic Chuck guarantees outstanding performance and reliability. The rigid assembly of these chucks result in accurate grinding or light milling work. The carefully selected pole spacing ensures the maximum possible grip on a wide section of work pieces. Using an additional top plate can accommodate all types, sizes and shapes of work pieces. The magnetic used in these chucks are "NdFeB" type. This magnet is very powerful than "AlNiCo" type. Under ideal conditions the test result shows that the holding power/cu. inch is 55 kg. Which is much higher than "AlNiCo" magnets.

Accuracy as per IS - 4816 - 1971

SPECIFICATIONS:

Cat No.	Size mm.	Pole Gap mm
KM - 100 SP	D100 X H60	19
KM - 150 SP	D150 X H60	19
KM - 160 SP	D160 X H60	19
KM - 200 SP	D200 X H60	19
KM - 225 SP	D225 X H60	19
KM - 250 SP	D250 X H70	19
KM - 315 SP	D315 X H80	19
KM - 375 SP	D375 X H80	19
KM - 400 SP	D400 X H80	19
KM - 450 SP	D450 X H80	19

Cat No.	Size mm.	Pole Gap mm
KM - 100 MP	D100 X H60	14
KM - 150 MP	D150 X H60	14
KM - 160 MP	D160 X H60	14
KM - 200 MP	D200 X H60	14
KM - 225 MP	D225 X H60	14
KM - 250 MP	D250 X H70	14
KM - 315 MP	D315 X H80	14
KM - 375 MP	D375 X H80	14
KM - 400 MP	D400 X H80	14
KM - 450 MP	D450 X H80	14

KUMAUN

ROUND PERMANENT MAGNETIC CHUCK

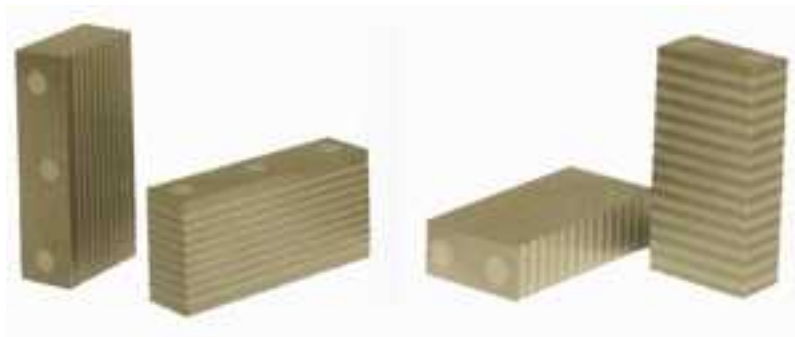


KUMAUN

ROUND PERMANENT MAGNETIC CHUCK

Cat No.	Size mm.	Pole Gap mm
KM - 100 CP	D100 X H60	12
KM - 150 CP	D150 X H60	12
KM - 160 CP	D160 X H60	12
KM - 200 CP	D200 X H60	12
KM - 225 CP	D225 X H60	12
KM - 250 CP	D250 X H70	12
KM - 315 CP	D315 X H80	12
KM - 375 CP	D375 X H80	12
KM - 400 CP	D400 X H80	12
KM - 450 CP	D450 X H80	12

**KUMAUN
TRANSFER BLOCK**



KUMAUN

TRANSFER BLOCK

Ground with parallelism, flatness, and square ness within 5 microns.

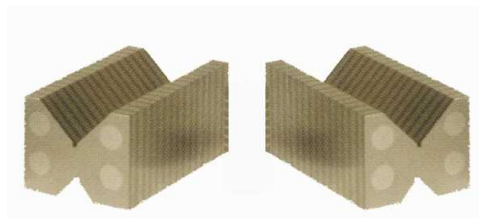
These blocks have no magnetism but when placed parallel to poles of chuck, they transfer magnetic power to top and sides for holding.

Available with V shaped face for holding round jobs.

One pair of blocks is finished together.

SPECIFICATIONS:

Cat No.	Sizes mm.
	L W H
KM - 501	50 x 100 x 35
KM - 502	60 x 75 x 30
KM - 503	50 x 75 x 75
KM - 504	50 x 100 x 50
KM - 505	80 x 120 x 25
KM - 506	60 x 100 x 25
KM - 507	50 x 100 x 20



Cat No.	Sizes mm.
	L W H
KM - 508	50 x 45 x 60
KM - 509	110 x 45 x 60
KM - 510	75 x 35 x 65
KM - 511	100 x 35 x 65
KM - 512	60 x 45 x 60

KUMAUN

HEAVY DUTY MULTICOIL ELECTRO-MAGNETIC CHUCK



KUMAUN

HEAVY DUTY MULTICOIL ELECTRO-MAGNETIC CHUCK

Strong Magnetic Field to hold the work piece strongly.

Used for holding on surface grinding machine.

Chuck is tested for earth terminal test, waterproof test, temperature rise test, & demagnetizing tests.

Provided with variable supply to vary power, which helps in aligning & removing of warp ages of thin jobs.

Work holding device for surface grinding machines, each pole is having separate coil, as such very strong & even magnetic flux is generated.

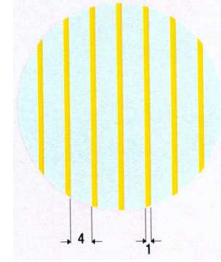
SPECIFICATIONS:

Cat No.	Sizes mm.			Gap	Pole Pitch
	L	W	H		
SI-EMC-1806 MP	450	150	100	15	40
SI-EMC-2008 MP	500	200	100	15	40
SI-EMC-2408 MP	600	200	100	15	40
SI-EMC-2410 MP	600	250	100	15	40
SI-EMC-3010 MP	750	250	100	15	40
SI-EMC-3610 MP	900	250	100	15	40
SI-EMC-2412 MP	600	300	100	15	40
SI-EMC-3012 MP	750	300	100	15	40
SI-EMC-3612 MP	900	300	100	15	40
SI-EMC-4010 MP	1000	250	110	15	40
SI-EMC-4012 MP	1000	300	110	15	40
SI-EMC-6010 MP	1500	250	110	15	40
SI-EMC-6012 MP	1500	300	110	15	40
SI-EMC-6016 MP	1500	400	110	15	40

SPECIAL SIZES AVAILABLE ON REQUEST

KUMAUN

HEAVY DUTY MULTICOIL ELECTRO-MAGNETIC RECTANGULAR CHUCK



KUMAUN

HEAVY DUTY MULTICOIL ELECTRO-MAGNETIC RECTANGULAR CHUCK

FINE PITCH WITH TRANSVERSE POLE

ACCURACY AS PER IS - 8710 - 1978

These Electromagnetic Chucks are designed for strong electro magnetic field to hold the work piece securely

Minimum mechanical deformation with solid one -piece housing Uniform magnetic force distribution with specially developed rigid top plate

Minimum power consumption

Full magnetic surface offering easy operation

Versatile clamping, excellent holding on a broad range of work piece sizes

Possibility to combine several chucks for a large uninterrupted surface

Low profile for more wheel head clearance Normal input voltage 110 VDC.

Back and end work stop rail

Minimum twice the length of chuck power cable

SPECIFICATIONS:

Cat No.	Sizes mm.			Pole Gap mm
	L	W	H	
SH - ELM - 1460 FP	350	150	100	4 + 1
SH - ELM - 1860 FP	450	150	100	4 + 1
SH - ELM - 2080 FP	500	200	100	4 + 1
SH - ELM - 2480 FP	600	200	100	4 + 1
SH - ELM - 2410 FP	600	250	100	4 + 1
SH - ELM - 2412 FP	600	300	100	4 + 1
SH - ELM - 3010 FP	750	250	100	4 + 1
SH - ELM - 3012 FP	750	300	100	4 + 1
SH - ELM - 3610 FP	900	250	100	4 + 1
SH - ELM - 3612 FP	900	300	100	4 + 1
SH - ELM - 4010 FP	1000	250	110	4 + 1
SH - ELM - 4012 FP	1000	300	110	4 + 1
SH - ELM - 6010 FP	1500	250	110	4 + 1
SH - ELM - 6012 FP	1500	300	110	4 + 1
SH - ELM - 6016 FP	1500	400	110	4 + 1

**CONTROL UNIT: D.C.POWER SUPPLY UNIT WITH MAG / DEMAG FACILITY
VARIABLE CONTROL UNIT**

NORMAL INPUT VOLTAGE 230 SINGLE PHASE.

SPECIAL SIZES ARE AVAILBLE ON REQUEST.

KUMAUN

ELECTROPERM MAGNETIC CHUCK



KUMAUN

ELECTRO-PERM MAGNETIC CHUCKS FOR HEAVY DUTY MILLING MACHINE

"KUMAUN" introduces Electro-perm Magnetic Chucks for heavy duty milling machine. These chucks ensure high magnetic and mechanical performance. This chuck is "COLD" device, as no internal wear or deformation resulting from moving internal parts.

Electro-perm Magnetic Chucks do not consume electrical power except for the very short period of activation or deactivation of the working surface. Once fixed to the machine table EPM chucks are as stable as machine.

EPM chucks are economical for operation and maintenance. Magnetic clamping system is most powerful. Chucks are switched ON & OFF by simple electrical pulse. A variable output from 20% to 100 % is controlled from push button unit.

In operating condition no power supply is necessary for holding work pieces. So no risk when power fails.

The de-magnetization cycle of chuck eliminates possible residual magnetism in work piece, therefore easy release for high alloy steel parts.

EPM chuck is designed for heavy-duty operation such as milling cut of 3 to 6 mm depth at recommended speed & feed.

SPECIFICATIONS:

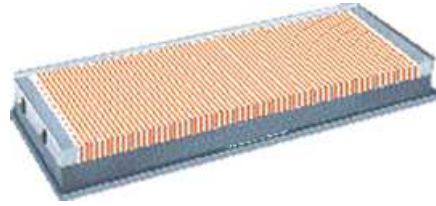
CAT No.	SIZE IN MM		
	L	W	H
EPMC - 2412	600	300	90
EPMC - 3012	750	300	90
EPMC - 4012	1000	300	90
EPMC - 6012	1500	300	90
EPMC - 2416	600	400	90
EPMC - 3016	750	400	90
EPMC - 4016	1000	400	90
EPMC - 6016	1500	400	90

Accessories: Capacitor Discharge Type Control Power Unit.

Special sizes are available on request.

KUMAUN

ELECTRO-PERM MAGNETIC CHUCK



KUMAUN

ELECTRO-PERM MAGNETIC CHUCKS FOR GRINDING MACHINE

Electro-perm magnetic chuck offers minimum mechanical deformation with solid one piece housing. This chuck is a **COLD** device.

These chucks do not consume electrical power only when activation and deactivation of magnets power is required. This results in very less consumption of electricity as compared to conventional electrical chucks.

EPM chucks are economical for operation and maintenance and also most powerful chucks. These chucks are switched **ON** and **OFF** with simple electrical pulse. A variable output from 20% to 100% is controlled from one push button switch.

EPM chucks are entirely independent of external power supply during the holding of work pieces. So no risk when power fails.

The demagnetization cycle of EPM chucks reduces possible residual magnetism in the work piece.

SPECIFICATIONS:

Cat No.	Sizes mm.			Pole Gap mm
	L	W	H	
SH - EPM - 1460	350	150	70	4 + 1
SH - EPM - 1860	450	150	70	4 + 1
SH - EPM - 2080	500	200	70	4 + 1
SH - EPM - 2480	600	200	70	4 + 1
SH - EPM - 2410	600	250	70	4 + 1
SH - EPM - 2412	600	300	70	4 + 1
SH - EPM - 3010	750	250	70	4 + 1
SH - EPM - 3012	750	300	70	4 + 1
SH - EPM - 3610	900	250	70	4 + 1
SH - EPM - 3612	900	300	70	4 + 1
SH - EPM - 4010	1000	250	70	4 + 1
SH - EPM - 4012	1000	300	70	4 + 1
SH - EPM - 6010	1500	250	70	4 + 1
SH - EPM - 6012	1500	300	70	4 + 1
SH - EPM - 6016	1500	400	70	4 + 1

SPECIAL SIZES ARE AVAILBLE ON REQUEST

CAPACITOR DISCHARGE TYPE CONTROL POWER UNIT

KUMAUN
COOLANT SEPERATOR



KUMAUN

COOLANT SEPERATOR

Essential cleaning unit for iron particles from re-circulating coolant in grinding machines
Capable of continuous removal of ferro-magnetic contamination
Powerful permanent magnet rotates attracting fine iron particles from coolant flow
Spring loaded rubber roller squeezes and drop back the coolant in tank
Iron sledges are removed by scraper blade, which can be adjusted
These can be easily dismantled for maintenance
Supplied complete with driving gear/motor assembly
Generally made with strontium ferrite magnets, can also be made with rare earth NdFEB magnets

SPECIFICATIONS:

Cat. No.	Capacity in L pm	Driving Power (Hp)	Rotation
KM110	30	0.25	10 RPM
KM111	60	0.50	10 RPM
KM112	100	0.75	10 RPM
KM113	150	1.75	10 RPM
KM114	200	1.50	10 RPM
KM115	300	1.75	10 RPM

SPECIAL SIZES ARE AVAILBLE ON REQUEST.